



IAU Minor Planet Center

MPC Operations Status

Processing ([Info](#))

ECS: Accessible

Observer Services (NEOs)

- NEO Services Overview
- NEO Confirmation
- NEO Confirmation (RA order)
- NEO Ratings
- NEO Page
- NEO Observation Planning Aid
- NEOChecker
- NEOCMTChecker

Observer Services

- Services Overview
- IAUMail
- Minor Planet & Comet Ephem.
- Natural Satellite Ephemerides
- New Object Ephemerides
- MPChecker
- CMTChecker
- Distant Artificial Satellites
- Observing List Customizer
- Sky Coverage

Orbital Elements

- Orbital Elements Overview
- MPCORB
- Orbital Elements for Programs
- MPCAT
- MPCUPDATE

Astrometric Observations

- MPCAT-OBS
- MPCOBS

Publications

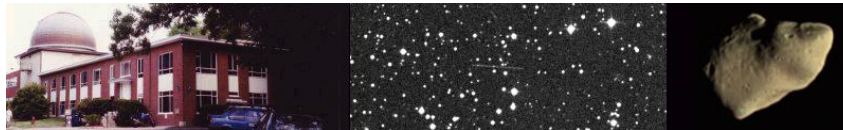
- Publications Overview
- MPECs*
- MPC Archive
- MPC RSS Feeds
- CBAT RSS Feeds

Documentation

- Documentation Overview
- Minor Body Astrometry
- MPC Status Page
- What's New

Lists and Plots

- Lists and Plots Overview
- Minor Planets
- Comets
- Animations
- General Information
- Astronomical Headlines



MPEC 2010-K12 : 2010 KE

The following [Minor Planet Electronic Circular](#) may be linked-to from your own Web pages, but must **not** otherwise be [redistributed electronically](#).
A form allowing access to any *MPEC* is at [the bottom of this page](#).



[Read MPEC 2010-K11](#)



[Read MPEC 2010-K13](#)

M.P.E.C. 2010-K12

Issued 2010 May 17, 17:33 UT

The Minor Planet Electronic Circulars contain information on unusual minor planets and routine data on comets. They are published on behalf of Commission 20 of the International Astronomical Union by the Minor Planet Center, Smithsonian Astrophysical Observatory, Cambridge, MA 02138, U.S.A.

Prepared using the [Tamkin Foundation Computer Network](#)

MPC@CFA.HARVARD.EDU

URL <http://www.minorplanetcenter.org/iau/mpc.html>

ISSN 1523-6714

2010 KE

Observations:

K10K00E*	C2010	05	16.33725	15	54	04.46	-16	36	34.2	19.1	V	EK012G96
K10K00E	C2010	05	16.34326	15	54	06.73	-16	37	44.1	19.6	V	EK012G96
K10K00E	C2010	05	16.34929	15	54	09.03	-16	38	54.3	19.4	V	EK012G96
K10K00E	C2010	05	16.42594	15	54	39.16	-16	53	45.3	19.6	V	EK012G96
K10K00E	C2010	05	16.42637	15	54	39.27	-16	53	49.9	19.4	V	EK012G96
K10K00E	C2010	05	16.42680	15	54	39.52	-16	53	54.8	19.2	V	EK012G96
K10K00E	C2010	05	16.42722	15	54	39.67	-16	53	59.9	19.2	V	EK012G96
K10K00E	C2010	05	16.42804	15	54	39.99	-16	54	09.5	19.3	V	EK012G96
K10K00E	C2010	05	16.42843	15	54	40.17	-16	54	13.9	19.2	V	EK012G96
K10K00E	C2010	05	16.42880	15	54	40.28	-16	54	18.3	19.7	V	EK012G96
K10K00E	C2010	05	16.42918	15	54	40.46	-16	54	22.6	19.4	V	EK012G96
K10K00E	KC2010	05	17.03388	16	00	09.73	-19	02	24.1			EK012J95
K10K00E	SC2010	05	17.03871	16	00	12.14	-19	03	29.2			EK012J95
K10K00E	KC2010	05	17.04361	16	00	14.43	-19	04	33.6	19.6	R	EK012J95
K10K00E	C2010	05	17.23696	16	02	17.61	-19	47	31.6	19.1	R	EK012H01
K10K00E	C2010	05	17.23745	16	02	19.00	-19	47	27.7	18.8	R	EK012651
K10K00E	C2010	05	17.23996	16	02	20.30	-19	48	03.8	18.9	R	EK012651
K10K00E	C2010	05	17.24247	16	02	21.59	-19	48	39.4	18.8	R	EK012651
K10K00E	C2010	05	17.24465	16	02	21.42	-19	49	20.1	18.7	R	EK012H01
K10K00E	C2010	05	17.25273	16	02	25.41	-19	51	14.1	18.8	R	EK012H01
K10K00E	C2010	05	17.25982	16	02	28.91	-19	52	54.2	18.9	R	EK012H01
K10K00E	C2010	05	17.32642	16	03	02.91	-20	08	24.0	19.8	R	EK012926
K10K00E	C2010	05	17.32876	16	03	04.08	-20	08	56.7	20.2	R	EK012926
K10K00E	C2010	05	17.33111	16	03	05.23	-20	09	30.1	20.2	R	EK012926

Observer details:

[651 Grasslands Observatory, Tucson.](#) Observer J. E. McGaha. 0.62-m f/5.1 reflector + CCD.

[926 Tenagra II Observatory.](#) Observers P. R. Holvorcem, M. Schwartz. Measurer P. R. Holvorcem. 0.81-m f/7 Ritchey-Chretien + CCD.

[G96 Mt. Lemmon Survey.](#) Observers A. R. Gibbs, L. L. Wohlwend, K. Farnsworth, W. C. Decker, A. Berg. Measurers J. D. Ahern, E. C. Beshore, A. Boattini, G. J. Garradd, A. R. Gibbs, A. D. Grauer, R. E. Hill, R. A. Kowalski, S. M. Larson, R. H. McNaught. 1.5-m reflector + CCD.

[H01 Magdalena Ridge Observatory, Socorro.](#) Observers W. H. Ryan, E. V. Ryan. Measurer W. H. Ryan. 2.4-m f/8.9 reflector + CCD.

[J95 Great Shefford.](#) Observer P. Birtwhistle. 0.40-m f/6.0 Schmidt-Cassegrain + CCD.

Press Information Sheets

General

Contact Us

Index

Site Map

Search Site

Tech Info

Documentation

Links

Minor Planet Center

Central Bureau for Astro. Tel.

International Comet Quarterly

Smithsonian Astro. Obs.

Orbital elements:

2010 KE
 Epoch 2010 July 23.0 TT = JDT 2455400.5
 M 16.95228 (2000.0) P
 n 0.66690298 Peri. 224.87376 +0.19365837 +0.97811236
 a 1.2974609 Node 56.43616 -0.87253510 +0.20718275
 e 0.2451089 Incl. 5.24060 -0.44852974 +0.01927503
 P 1.48 H 26.6 G 0.15 U 7

Earth [MOID](#) = 0.0146 AU
 MPC

Residuals in seconds of arc

100516 G96	0.0	0.1-	100516 G96	0.3+	0.1+	100517 651	0.1+	0.1+
100516 G96	0.1-	0.0	100516 G96	0.3-	0.0	100517 651	0.7+	0.1-
100516 G96	0.0	0.0	100516 G96	0.0	0.1+	100517 H01	0.1-	0.3+
100516 G96	0.4+	0.2-	100517 J95	0.3-	0.2+	100517 H01	0.2-	0.2+
100516 G96	0.5-	0.2+	100517 J95	0.7+	0.7-	100517 H01	0.2-	0.1+
100516 G96	0.5+	0.3+	100517 J95	0.6-	0.1+	100517 926	0.3+	0.2-
100516 G96	0.2+	0.1+	100517 H01	0.1-	0.3+	100517 926	0.6+	0.1+
100516 G96	0.0	0.0	100517 651	0.6-	0.7+	100517 926	0.5+	0.2-

Ephemeris:

2010 KE a,e,i = 1.30, 0.25, 5 q = 0.9794

Date	TT	R. A. (2000)	Decl.	Delta	r	Elong.	Phase	V
2010 05 14		15 39.22	-10 23.2	0.0384	1.049	170.9	8.8	20.2
2010 05 15		15 44.75	-12 42.6	0.0352	1.046	172.5	7.3	20.0
2010 05 16		15 51.48	-15 29.4	0.0321	1.043	173.8	6.0	19.7
2010 05 17		15 59.86	-18 50.0	0.0291	1.040	173.9	5.9	19.5
2010 05 18		16 10.51	-22 52.5	0.0263	1.038	171.7	8.1	19.4
2010 05 19		16 24.44	-27 45.4	0.0238	1.035	167.4	12.3	19.3
2010 05 20		16 43.24	-33 35.1	0.0216	1.032	161.3	18.3	19.3
2010 05 21		17 09.54	-40 19.8	0.0197	1.030	153.6	25.9	19.3
2010 05 22		17 47.58	-47 37.3	0.0185	1.027	144.3	35.1	19.4
2010 05 23		18 43.20	-54 28.9	0.0178	1.025	133.9	45.3	19.6
2010 05 24		19 59.75	-59 17.5	0.0178	1.022	123.1	56.0	19.9
2010 05 25		21 27.12	-60 38.3	0.0185	1.020	112.8	66.2	20.3
2010 05 26		22 43.73	-58 46.3	0.0199	1.018	103.7	75.2	20.8
2010 05 27		23 39.45	-55 13.0	0.0217	1.016	96.0	82.8	21.2
2010 05 28		00 17.60	-51 15.4	0.0239	1.013	89.7	89.0	21.7
2010 05 29		00 44.05	-47 30.4	0.0264	1.011	84.6	93.9	22.1
2010 05 30		01 03.02	-44 10.5	0.0291	1.009	80.6	97.8	22.5
2010 05 31		01 17.15	-41 16.9	0.0319	1.007	77.4	100.8	22.8
2010 06 01		01 28.03	-38 47.2	0.0349	1.005	74.8	103.2	23.1

Carl W. Hergenrother

(C) Copyright 2010 MPC

M.P.E.C. 2010-K12



[Read MPEC 2010-K11](#)



[Read MPEC 2010-K13](#)

Display

MPEC number:

Clear

Enter an [MPEC](#) number in one of the following forms:

- 1997-B01 (the full form)
- J97B01 (the packed version of the full form)
- B01 (the abbreviated form)



Choose a language to translate this page!



Select to language

Google Translate

Select Language

Gadgets powered by Google

